



NIPPON PAINT

AQUA PRIMER FOR ALL SURFACES

Nippon Paint Aqua Primer for all surfaces which can be used on Wood, Wall and metal surfaces which provide superior bonding and enhances durability of topcoat.

GREEN ASSURED



PRODUCT FEATURES



Superior Bonding

Can be used as primer for Wood, Metal & Masonary Substrate



Low Odour

Healthy interiors- ensure that home owners can occupy the house immediately after painting



Low VOC

Environment- Friendly



For All Surfaces

TECHNICAL DETAILS

Colour Range	: Light Grey
Finish	: Smooth Matt
Dry Time	: To Touch: 30 minutes To Recoat: 4-6 hours
Clean up solvent	: Clean, potable water
Stability of diluted paint	: 24 Hours
Shelf life	: 2 Years from the date of manufacture in original tightly closed containers.
Dilution	: Upto 20% by volume with clean, potable water for Wood & Metal surfaces. Stir well before use. Upto 50% by volume with clean, potable water for Masonary surfaces. Stir well before use. and 50% by volume with clean, potable water for interiors

Where To use: Can be used on Interior Wood, Metal & Masonry Surfaces





NIPPON PAINT

AQUA PRIMER FOR ALL SURFACES

HOW TO APPLY

Surface Preparation:

For Wood Surface: Ensure wood is aged properly. Make sure that surface is free from dust, dirt & Moisture. For previously painted wood Scrape off loose paint, Sand the surface with emery paper no. 180. and wipe clean.

For Metal Surface: Previously Painted Surfaces: Scrape off loose and flaking paint and make sure the remainder is firmly attached. Sand glossy surfaces and enamels thoroughly and wipe clean. Remove all rust by abrasive paper or mechanical sanding.

Fresh Metal Surface: Remove all grease, dirt and other surface contaminants. Remove all rust by sanding with emery paper and wipe clean.

For Wall Surface: Keep surface clean & dry. Remove dust, dirt, grease and any flaking paint from the surface and sand to smooth. Ensure there is no fungus or moisture on the walls.

Coverage:



AQUA PRIMER

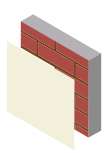
For Wood & Metal:
12.08 - 14.86 sq.mt./litre/coat

For Wall:
14.86 - 18.58 sq.mt./litre/coat

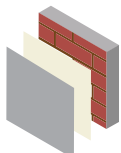
(Actual coverage is dependant on the substrate condition, surface porosity, method of application).

Process:

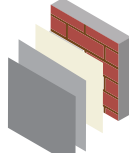
Recommended Painting System: For Wood & Wall Surfaces



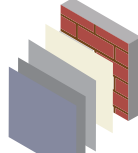
Primer
Nippon Paint
Aqua primer



Putty
Nippon Paint
Acrylic Wall Putty

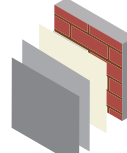


Primer
Nippon Paint
Aqua primer

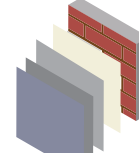


Top Coat
Nippon Paint
Interior Topcoats

Recommended Painting System: For Metal Surfaces



Primer
Nippon Paint
Aqua primer



Top Coat
Nippon Paint
Interior Topcoats

Apply 1 coat

Apply 1-2 coats

Apply 1 coat

Apply 2-3 coats

Allow it to dry
for 4-6 hours

Allow it to dry
overnight

Allow it to dry
for 4-6 hours

Allow it to dry
for 4-6 hours

Apply 1 coat

Apply 2-3 coats

Allow it to dry
for 4-6 hours

Allow it to dry
for 4-6 hours

Application:

By Brush, Roller, Conventional Spray

SAFETY AND ENVIRONMENT

During Painting:

Always work in a well ventilated area. Wear appropriate attire, especially gloves and eye protection gear. Avoid contact with skin as it may cause irritation.

Cleaning:

Clean all equipments with clean water immediately after use

Safety Instructions:

In the case of eye contact, rinse immediately with water and seek immediate medical treatment. To remove paint from skin, use soap and water or appropriate cleanser. In the event of spillage, contain and collect spilt paint by using sand or earth.

Precautions:

Avoid painting when the temperature is below 10 degrees Celsius. Painting is not recommended if the moisture content and alkalinity of the walls is high. Moisture content of the walls should be below 16% (measured by Protimeter) and alkalinity of the wall should be below pH-9. Relative humidity should be below 85%. Painting on a newly plastered wall is recommended after 12 weeks of curing.

Note: For best performance on metal surface use two coats of Aqua primer

Storage:

Store paint in a cool, dry and well ventilated place away from heat sources, flammables or direct sunlight. Keep container tightly closed in a secure, upright position. Do not store near food, drink or animal feed. Keep out of reach of children. Do not dispose of unwanted paint into drains, water sources or open sewers. To dispose safely, pour unwanted paint onto old newspapers and let dry before placing in a proper waste receptacle.

Disposal Information:

Disposal of any paint waste & containers in accordance with applicable Environment (Protection) Act 1986 under the Hazardous Wastes (Management & Handling) rules 1989.

Environment:

Does not contain any added lead, mercury or chromium compounds.

Lead content does not exceed 90 parts per million.

