



NIPPON PAINT

WEATHERBOND PRO

HIGH DURABLE EXTERIOR EMULSION

Nippon Paint Weatherbond Pro is a high performance, pure acrylic exterior painting system which offers outstanding protection for exterior surfaces. The product also offers unique protection against water, algal attack, dust pick up, hairline crack, efflorescence and extreme weathering. Weatherbond PRO system provides effective waterproofing & anti-carbonation properties.

GREEN ASSURED



PRODUCT FEATURES



Dirt Pick-up Resistant

Therefore the exteriors look new and beautiful for years.



Water Resistant Film

No damp and shabby surfaces.



Algal and Fungal Resistance

Gives a polished look to your home for years to come.



Low VOC

Healty interiors- ensure that home owners can occupy the house immediately after painting.



Extreme Durability

Surface and Colours look uniform giving a beautiful look to the walls for years.

15

15 Year Protection

Performance warranty upto
*15 years for (Colour Retention & Film Integrity) for vertical surfaces.
10* years Waterproofing warranty &
10* years Anti Algal Warranty. Please refer Warranty Card for further details.





NIPPON PAINT

WEATHERBOND PRO

HIGH DURABLE EXTERIOR EMULSION

TECHNICAL DETAILS

Bases	:	White & Bases
Colour Range	:	Please refer to Nippon Paint shade card and fan decks
Finish	:	Sheen finish
Dry Time	:	To Touch: 30 minutes To Recoat: 4-6 hours
Gloss level	:	60° head: 30 to 40 units
Clean up solvent	:	Clean, potable water
Stability of diluted paint	:	24 Hours
Shelf life	:	3 Years from the date of manufacture in original tightly closed containers
Dilution	:	Upto 20% by volume with clean, potable water

Coverage:



WEATHERBOND PRO

Weatherbond PRO Emulsion:
5.11-6.04 sq.mt./litre/2 coats
Weatherbond PRO Basecoat:
2.79-3.25 sq.mt./litre/coat for both Repainting as well as fresh concrete.
(Actual coverage is dependant on the substrate condition, surface porosity, method of application)

HOW TO APPLY

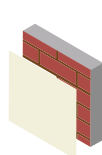
Surface Preparation:



For Repainting: Clean the surface till it is free from dust, grease and flaking paint. Any unstable paint to be removed, using high-pressure wash or scraper, whichever is appropriate. Algae and fungus on the wall to be removed, by using high-pressure wash or coir brush and shall be treated with Walltron Kleanwall Fungicidal solution.
New plaster/Fresh Concrete: Ensure surface is completely cured and dry. application of cement paint/lime/Cement putty as undercoat is not recommended. Fill the cracks upto 3mm if any with Walltron N-seal cracksealer powder.

Process:

For Fresh Concrete:

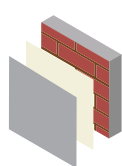


Primer

Nippon Paint
Dr. Bond Efflorescence
Resistant Sealer

Apply a coat with
100% dilution water

Allow it to dry
for 6-8 hours

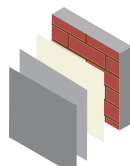


Base Coat

Nippon Paint
Weatherbond PRO
Basecoat

Apply a coat with
30% dilution water

Allow it to dry
for 12-18 hours

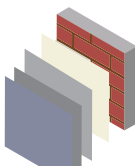


Base Coat

Nippon Paint
Weatherbond PRO
Basecoat

Apply a coat
without dilution

Allow it to dry
for 6-8 hours



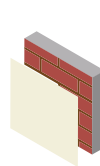
Top Coat

Nippon Paint
Weatherbond PRO

Apply 2-3 coats

Allow it to dry
for 4-6 hours

For Repainting:

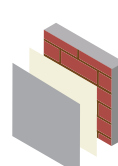


Primer

Nippon Paint
Dr. Bond Efflorescence
Resistant Sealer

Apply a coat with
100% dilution water

Allow it to dry
for 4-6 hours

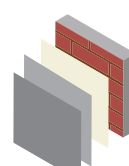


Base Coat

Nippon Paint
Weatherbond PRO
Basecoat

Apply a coat
without dilution

Allow it to dry
for 12-18 hours



Top Coat

Nippon Paint
Weatherbond PRO
Emulsion

Apply 2-3 coats
with upto 20% dilution

Allow it to dry
for 4-6 hours

Application:

Roller: Dilute both 1st and 2nd coats with 20% water

SAFETY AND ENVIRONMENT

During Painting:

Always work in a well ventilated area. Wear appropriate attire, especially gloves and eye protection gear. Avoid contact with skin as it may cause irritation.

Cleaning:

Clean all equipments with clean water immediately after use.

Safety Instructions:

In the case of eye contact, rinse immediately with water and seek immediate medical treatment. To remove paint from skin, use soap and water or appropriate cleanser. In the event of spillage, contain and collect spilt paint by using sand or earth.

Precautions:

Avoid painting when the temperature is below 10°C. Painting is not recommended if the moisture content and alkalinity of the walls is high. Moisture content of the walls should be below 16% (measured by Protimeter) and alkalinity of the wall should be below pH-9. Relative humidity should be below 85%. Painting on a newly plastered wall is recommended after 12 weeks of curing.

Note: For dark shades & Horizontal surfaces 1 or 2 additional coats may be required for better performance of paint film. Primed surface should be immediately painted with subsequent coats.

Note: Weatherbond PRO should not be applied on surfaces / substrates that are subjected to continuous seepage or dampness.

Post Application Instruction: To enhance performance of the paint film, clean the exterior surfaces, algae or fungus if any with clean water in an interval of 6 months.

Storage:

Store paint in a cool, dry and well ventilated place away from heat sources, flammables or direct sunlight. Keep container tightly closed in a secure, upright position. Do not store near food, drink or animal feed. Keep out of reach of children. Do not dispose of unwanted paint into drains, water sources or open sewers. To dispose safely, pour unwanted paint onto old newspapers and let dry before placing in a proper waste receptacle.

Disposal Information:

Disposal of any paint waste & containers in accordance with applicable Environment (Protection) Act 1986 under the Hazardous Wastes (Management & Handling) rules 1989.

Environment:

Does not contain any added lead, mercury or chromium compounds.
Lead content does not exceed 90 parts per million.

